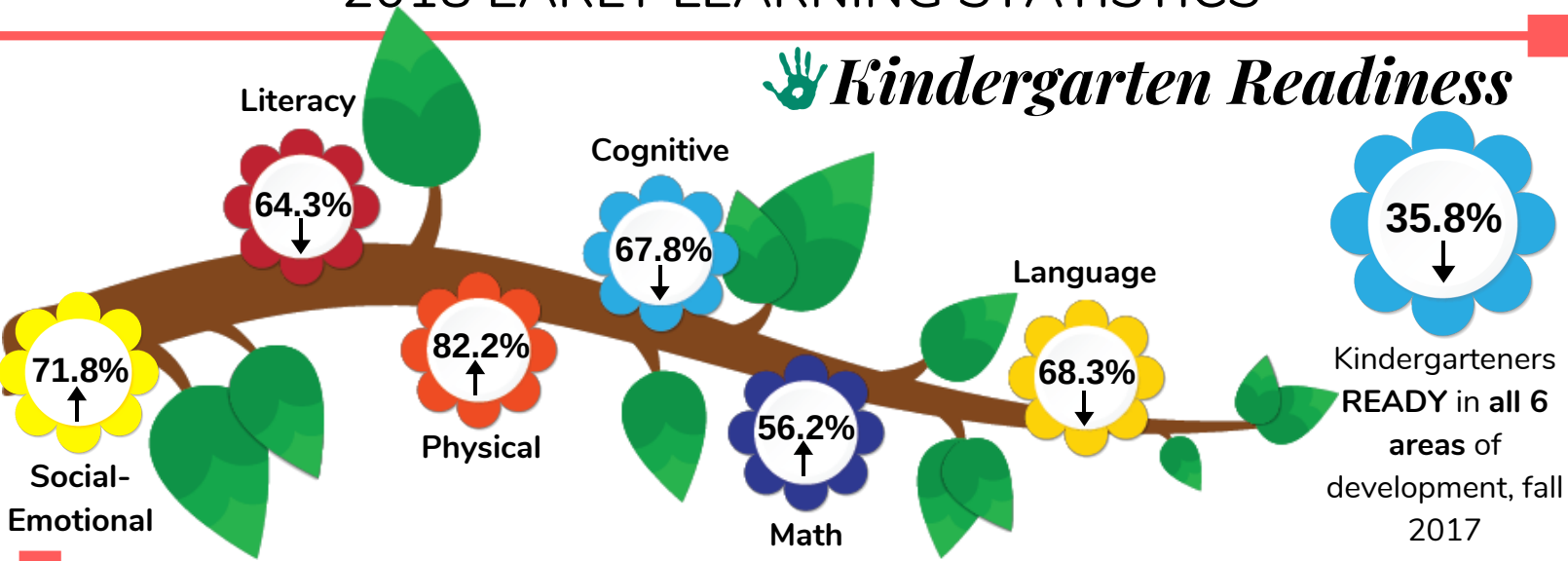


SKAGIT COUNTY

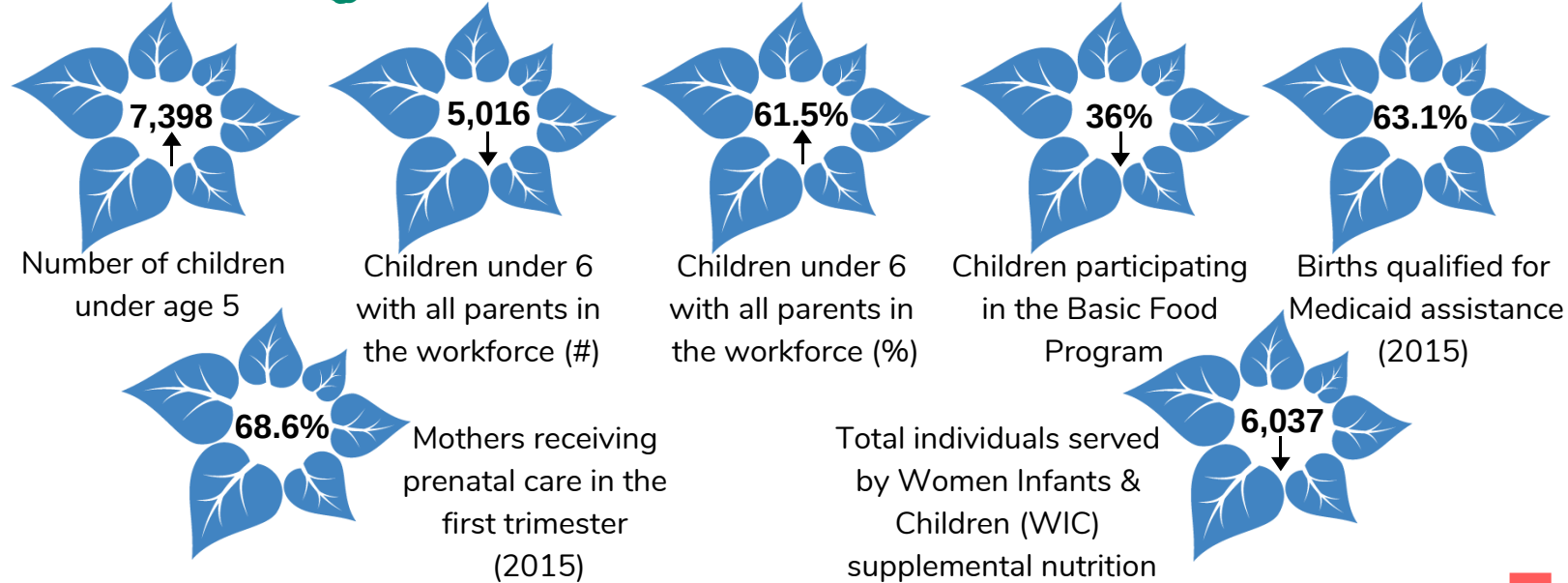
*All arrows indicate changes from 2017 statistics

2018 EARLY LEARNING STATISTICS

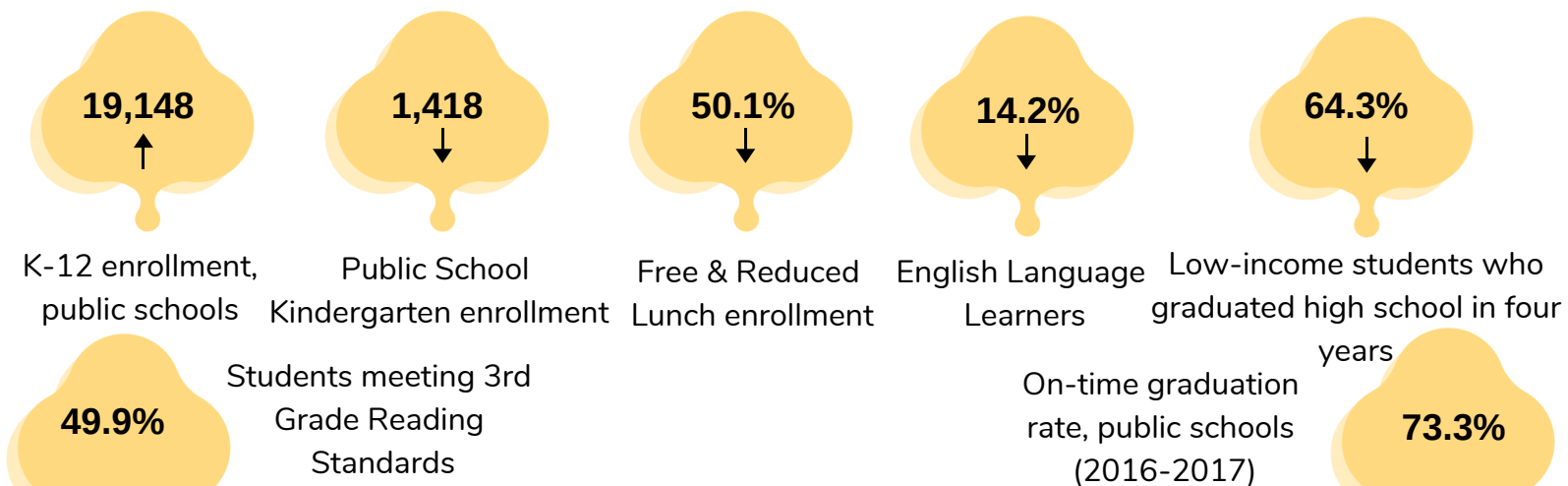
Kindergarten Readiness



Families



Schools



Professionals

379 ↓
Number of spaces for 3 & 4 yr olds in state & federally funded preschool (ECEAP & Head Start)

307 ↑
Number of Regional Transition Reports shared between preschool and kindergarten teachers

197
Children with developmental delays, ages birth-3, served by Early Services for Infants & Toddlers (ESIT)

87 ↓
Number of licensed child care and education programs – centers and family homes



2,159 ↓
Number of spaces available for children in licensed child care and education programs - centers and family homes

41 ↑
Number of partner organizations affiliated with Northwest Early Learning

66 ↓
Number of spaces available in Early Head Start, including migrant and tribal

92% ↑
Percent of licensed child care providers enrolled in Early Achievers

Communities

Median Household Income (2016) **\$60,983** **\$72,060** ↑ Estimated Basic Annual Cost of living for a family with 2 adults, 1 infant, 1 preschooler (2016)

2,403 ↓
Households with all children under age 6

9.1% ↓
Children under 6 who live in families in extreme poverty

Living at or below basic cost of living

83% ↑
Black Households

63.3% ↑
Hispanic Households

338 ↓
Homeless individuals living as family units

32.3% ↓
Working Poor: Asset Limited, Income Constrained, Employed (ALICE) + Federal poverty level

50.2% ↑
Asian Households

41.4% ↑
White Households